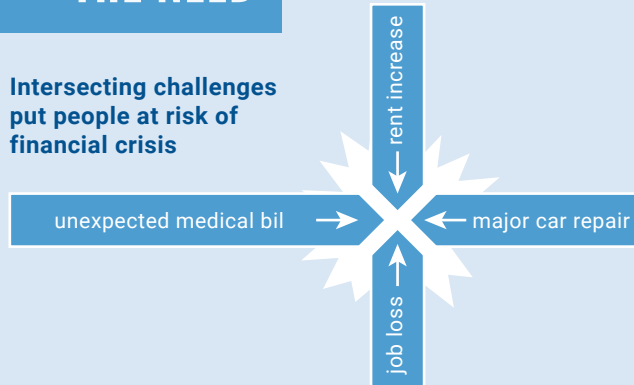


HOLISTIC APPROACH TO HEALTH AND HUMAN SERVICES CAN HELP STRUGGLING MARYLAND HOUSEHOLDS

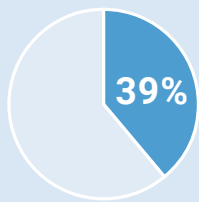
Longstanding systemic and institutional inequities have resulted in significant economic, education, housing, and health disparities among those in poverty, the working poor, and people of color. **ALICE** (Asset Limited, Income Constrained, Employed) households and those of people in poverty require comprehensive support so that they can get by—and get ahead.

THE NEED

Intersecting challenges put people at risk of financial crisis



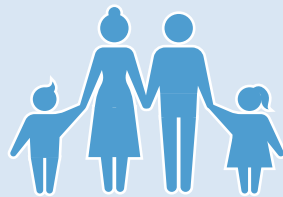
ALICE in Maryland - Pre Pandemic



- Households Below ALICE Threshold
- Households Above ALICE Threshold

Source: 2020 United Way ALICE Report

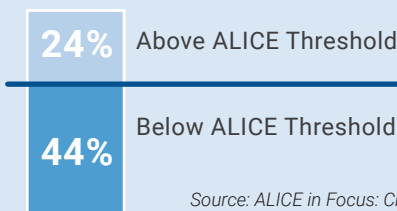
Maryland ALICE Survival Budget
Family of 4: \$87,000/year



\$15/hour job = \$31,200/year

Source: 2020 United Way ALICE Report

Maryland families struggling to feed their children:



Source: ALICE in Focus: Children in Financial Hardship, Maryland, 2022

UNITED WAY RESPONSE

United Way addresses multiple household stability challenges through a continuum of services that quickly benefit families and individuals, including:

ECONOMIC ADVANCEMENT



Programs:

- GED instruction
- Job readiness training
- Career mentoring
- CNA/GNA program
- WorkWays employer/employee support program
- Apprenticeships
- Financial literacy programs

EDUCATION

United Way Family Centers in Poppleton, Brooklyn, and Columbia:

- Provide early childhood education for infants and toddlers
- Help parents start or stay in jobs
- Bolster local economies



On Track 4 Success

- High school dropout prevention program

HEALTH

We improve the well-being of our neighbors by:

- Providing healthy food and meals
- Supporting healthier shopping options and easier access to nutritious food in food deserts
- Expanding access to health services
- Partnering with mental health service providers to support those we serve



HOUSING

STEP (Strategic Targeted Eviction Prevention) Program

Family Stability program

Relocation Program

Partnerships with property managers to reduce rents and waive security deposits

